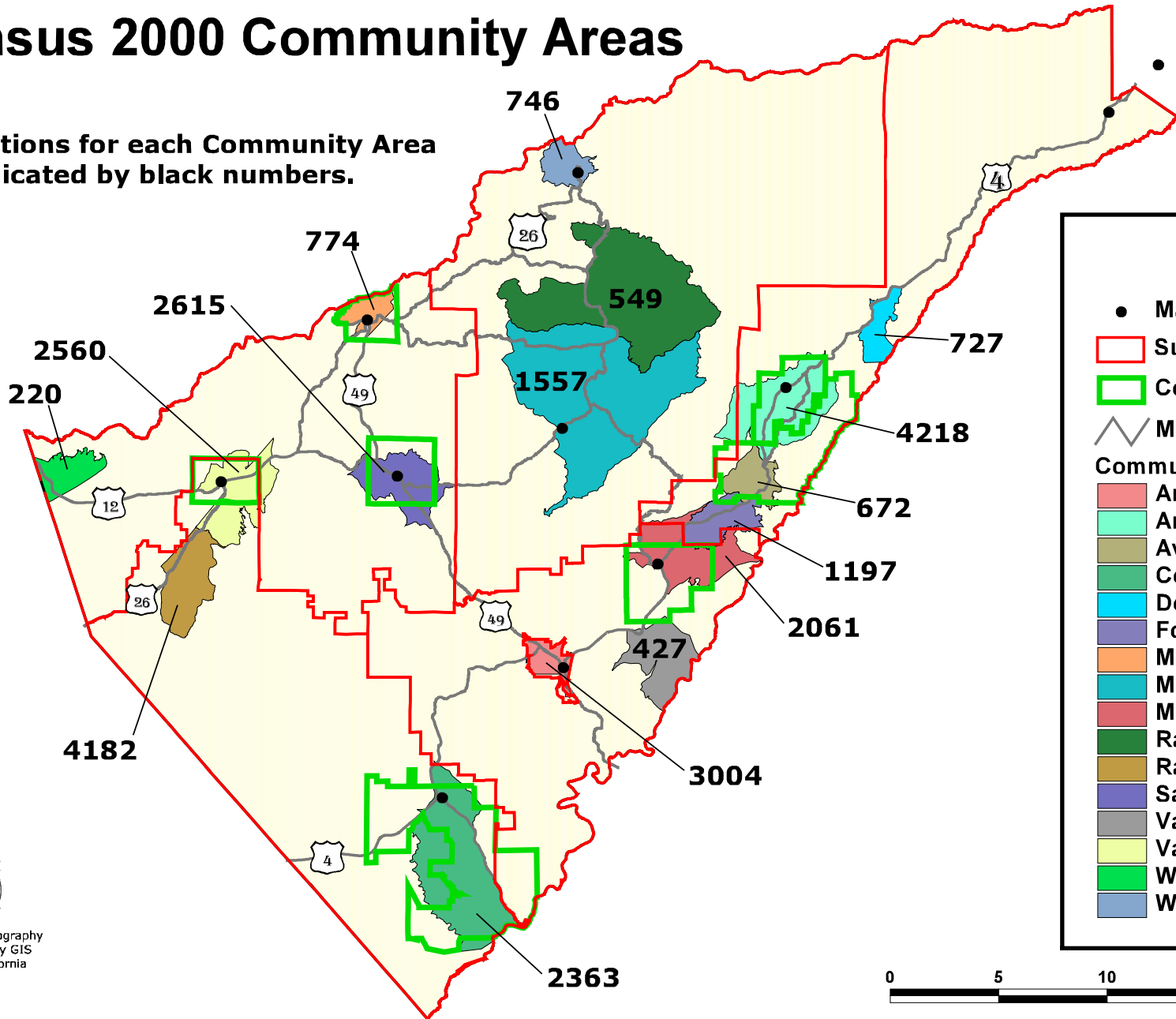


Census 2000 Community Areas

Populations for each Community Area are indicated by black numbers.



Legend

- Main Towns
- ▭ Supervisorial Districts
- ▭ Community Plan Boundaries
- ⚡ Main Roads

Community Areas

- Angels City
- Arnold
- Avery
- Copperopolis
- Dorrington
- Forest Meadows
- Mokelumne Hill
- Mountain Ranch
- Murphys
- Rail Road Flat
- Rancho Calaveras
- San Andreas
- Vallecito
- Valley Springs
- Wallace
- West Point



Map Design and Cartography
By Calaveras County GIS
San Andreas, California
May 2001

